



**RULES
REGULATIONS
CRITERIA**

HOME OF THE WORLD DANCE CREW CHAMPION- SHIP



AUCKLAND, NEW ZEALAND

CONTENTS

1. WORLD DANCE CREW CHAMPIONSHIPS (WDCC)

- 1.1 About us
- 1.2 Organisational Structure

2. FORMS AND RELEASES

- 2.1 General
- 2.2 Code of conduct
- 2.3 National eligibility
- 2.4 Inquiry & Protest forms
- 2.5 Forms of identification

3. EVENT STRUCTURE/SCHEDULE

4. WORLD CHAMPIONSHIP CALENDAR

- 4.1 Championship (Qualifier) events
 - 1. European Championships 2024 Naples ITA
 - 2. Pacific Championships 2024 Sydney AUS
 - 3. Asian Championships 2024 Manila PHI
 - 4. North American Championships 2024 Los Angeles USA
 - 5. South American Championships 2024 Parana BRA
- 4.2 Video Submissions
- 4.3 World Championships 2025 Auckland NZL
- 4.4 Opening ceremony 2025 Auckland NZL

5. QUALIFICATION

6. COMPETITION STRUCTURE

- 6.1 Championship (Qualifier) events
- 6.2 Qualifying standard
- 6.3 Qualification guidelines
- 6.4 Video submissions
- 6.5 World Championships
- 6.6 Division Order

7. DIVISIONS & REQUIREMENTS

- Junior Division
- Youth Division
- Adult Division
- Youth Super Crew Division
- Open Super Crew Division

- 7.1 Participation Limits

8. AGE GUIDELINES

8.1 Competing age

8.2 Age table

9. CREW AMENDMENTS

9.1 Changes & Substitutions

9.2 Injury & Unexpected circumstances

10. ROUTINE & MUSIC

10.1 Changes

10.2 Music guidelines

10.3 Routine guidelines

10.4 Attire & Props

11. CRITERIA & SCORE

Artistic Score

Technical Score

12. RESULTS

12.1 Tabulation

12.2 Results, Protests, & Tied scores

13. DEDUCTIONS & DISQUALIFICATIONS

13.1 Falls and Mistakes

13.2 Music & Movement

13.3 Disqualifications

13.4 Deductions

14. JUDGING

14.1 Judging Process

14.2 Judges

15. FEEDBACK

15.1 General feedback

15.2 World Championship Feedback

16. AWARDS & PRIZEGIVING

16.1 Prizegiving

16.2 Championship (Qualifier) Awards

16.3 World Championship Awards & Prize money

16.4 World Championship Crew Prize money

17. FAQ'S



PACIFIC QUALIFIER 2024 | SYDNEY, AUSTRALIA



THE WORLD DANCE CREW CHAMPIONSHIPS (1)

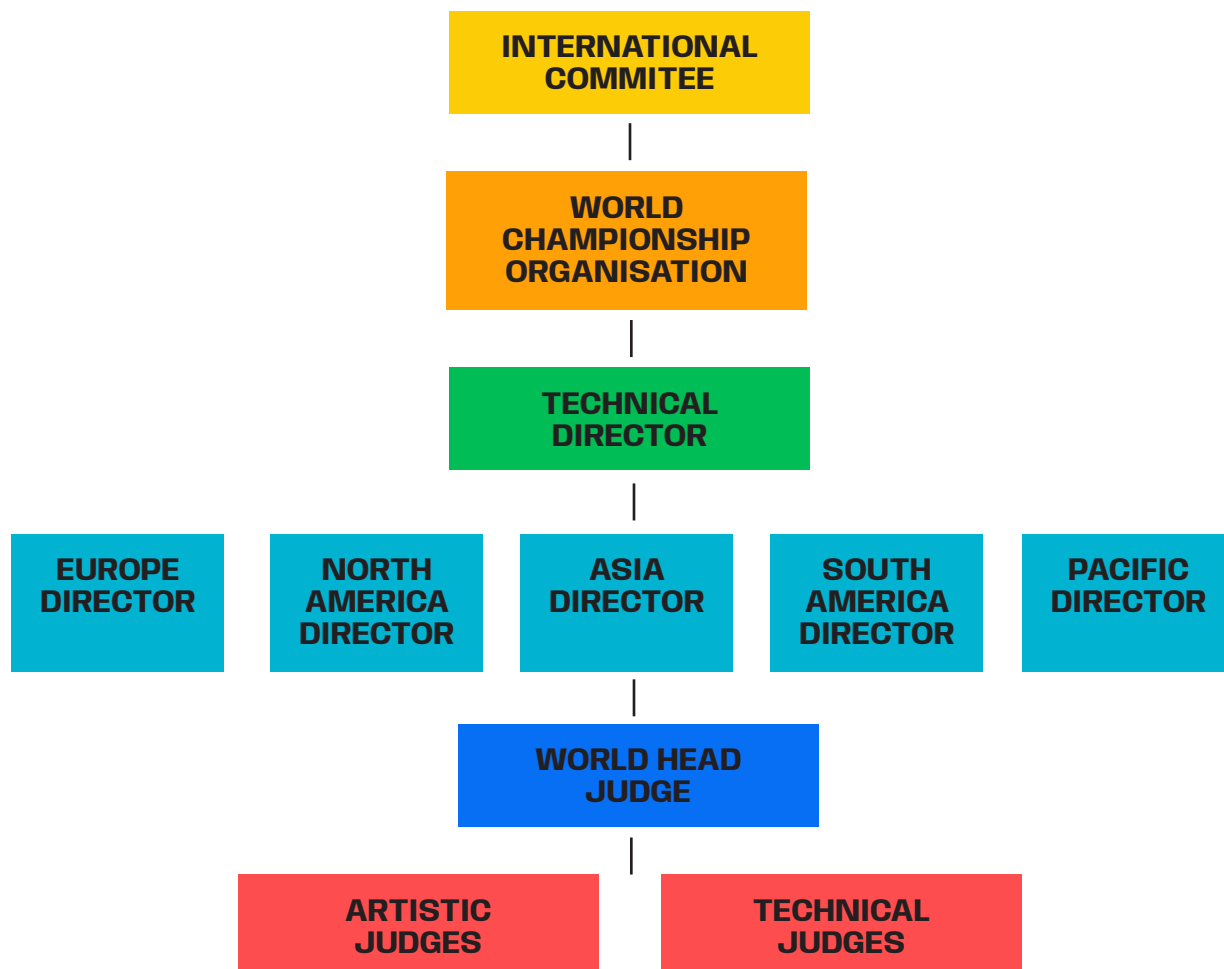
1.1 ABOUT US

The World Dance Crew Championships (WDCC), are world class events encompassing all street, club, studio, and modern dance styles. They bring together the artistry & performance of multicultural crews around the world, culminating in the 2024 WDCC Continental Championships (Qualifiers) and the 2025 World Dance Crew Championship titles.

The World Dance Crew Championships are guided by an internationally represented committee designed to bring the global street dance community together to compete on a TRUE world stage, crowning the best of the best.

All qualifying events, video submissions, and world championships will be conducted with and adhere to the official WDCC Regulations & Criteria.

1.2 ORGANISATIONAL STRUCTURE



FORMS AND RELEASES (2)

2.1 GENERAL

All registration forms & releases must be completed, signed, and received by the WDCC office prior to the registration deadline by ALL crew managers. These documents must be submitted with all appropriate identification. Fees must be paid before the payment deadline. Information can be found on our website, or email us at info@worlddancecrewchampionship.com.

Participants found falsifying information will be subject to disqualification.

2.2 CODE OF CONDUCT

The World Dance Crew Championships is a celebration of elite talent coming together to compete with the utmost respect for each other.

Participants are expected to represent themselves in a professional and responsible manner toward other participants and WDCC staff, both at the event and through social media.

Unacceptable behavior will be reviewed by the Technical Director and appropriate deductions or disqualifications will be enforced.

2.3 NATIONAL ELIGIBILITY

Crew members must be citizens, permanent residents, or hold visas of the country they are representing. Valid Passports or visas must accompany the crew's registration. Up to 2 non-citizens (8 for Super crews) may compete with a crew to represent the country; however, they must still provide identification for age and registration purposes.

If you have resided in the country for 12 months or more (proof required), you are eligible to compete as a resident.

2.4 INQUIRY & PROTEST FORMS

Inquiry forms are available upon request from the registration desk and are for clarifications only. Interpretations, results, or findings are final. Protests can only be lodged for deductions, disqualifications, and unexpected circumstances. Inquiry & protest forms will be responded to on the same day upon submission. Protests during finals will be addressed immediately after a crew's performance.

2.5 FORMS OF IDENTIFICATION

When submitting crew registration forms, photo ID is required for every competitor. For the continental qualifier events, we request a copy of your passport. If a crew member does not have a passport, a driver's licence or student photo ID is acceptable. If a crew member does not have any of the preferred forms of ID, a birth certificate can be submitted ALONG WITH a recent headshot photo of the competitor. Participants found falsifying information will be subject to disqualification.

Passports are the only acceptable form of ID for crew members competing the World Championship in New Zealand.

EVENT STRUCTURE SCHEDULE (3)

1. Registration - Online

Register your crew online. Please refrain from using offensive crew names. WDCC has the right to refuse any inappropriate name and request an alternative or designate an appropriate name until one has been decided upon. Once registered online, each crew will receive confirmation email. Each crew will also receive an event day check-in time, stage run time, and registration information.

REGISTER ONLINE AT WWW.WORLDDANCECREWCHAMPIONSHIP.COM

2. Event Day - Check In & Registration

Event check-in & registration must be completed in full prior to stage rehearsals. Music must also be submitted prior to competition day via the online form found on the "Register" page at www.worlddancecrewchampionship.com.

3. Stage Rehearsals

Each crew will be scheduled a 5-minute run-through with music. Scheduled run-throughs will be forfeited if missed. Crews will be informed of any unexpected circumstances that prevent rehearsals or result in reduced rehearsal time.

4. Crew Briefing

Prior to the Preliminary competition, a crew briefing will take place for ALL teams. A representative from each crew must be present for the official drawing of the preliminary order (Any crew not represented will perform first). The judging panel will be introduced, and important competition information will be relayed. This will also be an opportunity for photo ops & celebration, prior to competition start time. (Directors reserve the right to refer back to a random draw for preliminary order if needed).

5. Competition Schedule

Junior division

Youth division

Adult division

Youth Super Crew division

Open Super Crew division

6. Prize-Giving

Medals for 1st, 2nd, and 3rd place

Plate awards for 1st 2nd and 3rd place

Individual Awards

PRIZE MONEY

Qualification events & World Championships

World Championships

World Championships

World Championships

WORLD CHAMPIONSHIP CALENDAR (4)

4.1 2024 CHAMPIONSHIP (QUALIFIER) EVENTS

1. Asian Championships	1st-2nd June 2024	Manila	PHILLIPINES
2. European Championships	8th-9th June 2024	Naples	ITALY
3. North American Champs	13th-14th July 2024	Los Angeles	USA
4. South American Champs	15th-16th June 2024	Parana	BRAZIL
5. Pacific Championships	22nd-23rd June 2024	Sydney	AUSTRALIA

4.2 2024 VIDEO SUBMISSION PERIOD

Start date: 15th July 2024
End date: 12th August 2024

Online submission

4.3 2025 WORLD CHAMPIONSHIPS

Date: 13th - 19th April 2025
PRELIMS VENUE: Due Drop Arena Auckland NZ
FINALS VENUE: Spark Arena Auckland NZ

New Zealand

4.4 2025 OPENING CEREMONY

Date: 13th April 2025
VENUE: Due Drop Arena Auckland NZ

New Zealand

QUALIFICATION (5)

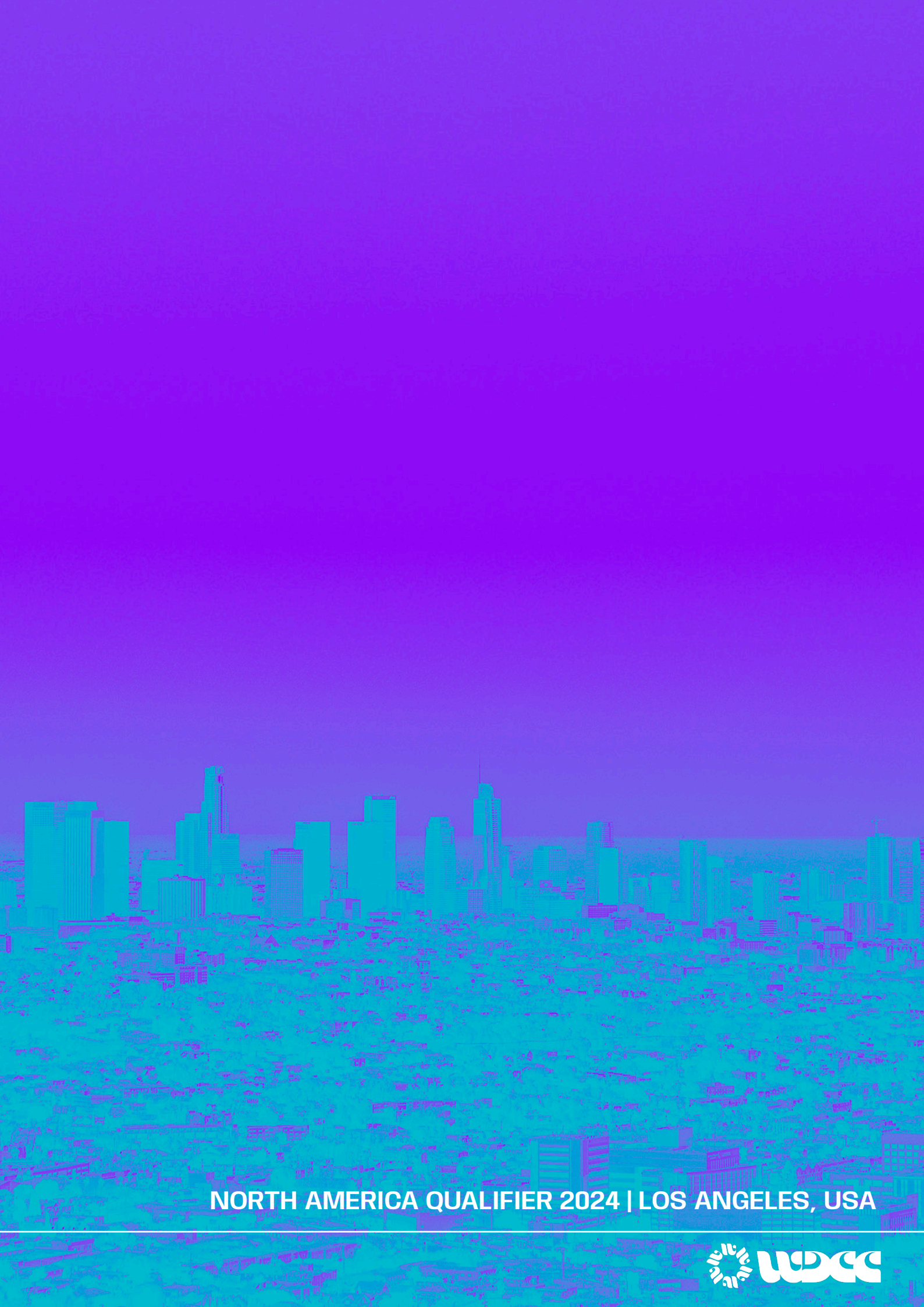
There are two ways a crew can qualify for the World Dance Crew Championships:

CHAMPIONSHIP QUALIFIER EVENTS (e.g. European Qualifier event)
Compete at a Championship qualifier event and obtain an A standard score.

OR

VIDEO SUBMISSION

Submit a video of your routine online and obtain a limited spot via invitation.



NORTH AMERICA QUALIFIER 2024 | LOS ANGELES, USA



COMPETITION STRUCTURE (6)

6.1 CHAMPIONSHIP (QUALIFIER) EVENT (e.g. Pacific Qualifier)

STAGE 1 - PRELIMINARIES - All crews

All crews perform in random order (determined at the crew briefing), and are scored in each division.

'A' finalists in each division are announced (top half of division)

The remaining teams will compete as Plate finalists (lower half of division).

STAGE 2 - PLATE FINALS - Lower half of division

Crews in the lower half of each division perform in reverse order and are scored.

Judges will determine the 'A' Standard cut off score for any crew(s) in this section to qualify for the World Dance Crew Championships 2025.

STAGE 3 - A FINALS - Top half of division

The Upper half of each division perform in reverse order and are scored.

The top 3 crews will medal (Gold, Silver, bronze).

All crews in the A finals automatically qualify for the World Championships in 2025.

EXAMPLE:

RANK	NAME	SCORE	QUALIFY	STANDARD	
(A Finals)					
1	Crew A	85.5	Qualify	A	Gold
2	Crew B	80.2	Qualify	A	Silver
3	Crew C	79.5	Qualify	A	Bronze
4	Crew D	75.0	Qualify	A	
5	Crew E	70.3	Qualify	A	
6	Crew F	70.0	Qualify	A	
7	Crew G	69.5	Qualify	A	
(Plate Finals)					
8	Crew H	65	Qualify	A	
9	Crew I	63.5	Qualify	A	*(Cut off)
10	Crew J	59	-	-	
11	Crew K	58.4	-	-	
12	Crew L	54.0	-	-	
13	Crew M	49.6	-	-	
14	Crew N	49.0	-	-	

NOTE: For an event with a division below 10 crews, that division may be run as one final with a qualifying standard for world championships.

6.2 QUALIFYING STANDARD

The 'A' standard score for all 2024 Championship (Qualifier) events will be determined by a WDCS international judging panel in conjunction with the Technical Director.

6.3 QUALIFICATION GUIDELINES

Crews may compete at any Qualifying Championship Event held around the world in 2024.

FOR EXAMPLE: If a crew from Australia decides to compete at the European Qualifier event instead of the Pacific Qualifier event, they can still qualify for the World Championship, & medal at the event.

If a crew is unable to compete at a 2024 Championship event, they may submit a video for a chance to secure one of the limited invitations to the World Championship.

If a crew fails to qualify via a qualifying Championship event, they can still submit a video submission for a chance to secure an invitation to the World Championship.

6.4 VIDEO SUBMISSIONS

Video submissions will open after all the Qualifying Championships have concluded. A LIMITED amount of invitations to the 2025 WDCS will be available. Video submissions must be uploaded in a high quality format. The entire crew must be in frame, and video filmed from the front with adequate lighting, and facial expressions should be visible if possible.

YOU MAY ONLY SUBMIT ONE VIDEO PER CREW & EACH DANCER IN ONE TEAM ONLY.

The video routine must adhere to all rules and criteria as outlined in this document. Once registration has been completed, your video can be submitted via the online form under the "Registrations" tab on www.worlddancecrewchampionship.com.

WDCS will determine the recipients of the allocated invitations. Crews who qualify will be notified by email and posted on the WDCS Website and social media channels.

If a video submission is accepted for the 2025 World Championship, the crew will need to register & confirm crew members, nationality, & age by the required deadline.

Any team failing to qualify via video submission will be notified via email.

There are no medals or prizes for Video submissions. Medals & awards are only available at live Events.

NOTE: WDCS has the right to revise or include any Crew vying to compete at any qualifier or World Championships, as WDCS understands that unexpected circumstances may arise from time to time.

6.5 WORLD CHAMPIONSHIPS

STAGE 1 - PRELIMINARIES - All crews

All crews perform in random order and are scored in each division.
A finalists are announced (Top half of division) & progress to SEMI FINALS
The remaining teams are Plate finalists (lower half of division).

STAGE 2 - PLATE FINALS - Lower half of division

Crews in the lower half of each division perform in reverse order and are scored.
The top 3 crews in the Plate division will receive Gold, Silver, & Bronze plates.
All other crews will be awarded WDCC place certificates.

STAGE 3 - SEMI FINALS - Top half of division

The Upper half of each division perform in random order and are scored.
Finalists will progress to the WORLD FINALS (the number of finalists is determined by the WDCC judging panel.)
All other crews will be awarded WDCC place certificates.

STAGE 4 - WORLD FINALS - Finalists

World finalists perform in reverse order and are scored.
The top 3 crews will be awarded Gold, Silver, & Bronze medals, as well as prize money.
All other crews in A finals are awarded WDCC place certificates.

6.6 DIVISION ORDER

Junior Division
Youth Division
Adult Division
Youth Super Crew Division
Open Super Crew Division

NOTE: Event organizers have the right to amend the performance and prizegiving order when required.

DIVISIONS & REQUIREMENTS (7)

NOTE: Dancers at the 2024 Qualifiers will remain the same competition age for the 2025 Competition.

JUNIOR DIVISION 5 - 9 Dancers

12 years & Under

Age as of DEC 31st 2024

MUSIC: 1:30-1:45mins (No less, no more)

YOUTH DIVISION 5 - 9 Dancers

13 - 17 years (Option to include up to 3 junior age dancers if needed)

Age as of DEC 31st 2024

MUSIC: 1:50 -2:10 (No less, no more)

ADULT DIVISION 5 - 9 Dancers

18 years & Over (Option to include 3 Youth age dancers if needed)

Age as of DEC 31st 2024

MUSIC 1:50 - 2:10 (No less, no more)

YOUTH SUPER CREW DIVISION 15 - 40 Dancers

17 & Under

Age as of DEC 31st 2024

MUSIC: 3:00-3:30 (No less, no more)

PROPS - Small hand-held props are allowable.

OPEN SUPER CREW DIVISION 15 - 40 Dancers

Open to all ages

MUSIC: 3:30-4:00 (No less, no more)

PROPS - Small hand-held props are allowable.

7.1 Participation limits

Dancers may compete in multiple divisions as long as they meet the age criteria & composition under Divisions & Requirements (Section 7).

NOTE: Dancers may compete in up to two teams per division. (Note: Competition order will not be amended to cater for possible back to back performances; this will be at your own risk).

NOTE: Only 3 "out-of-age" dancers may be registered per crew.



SOUTH AMERICA QUALIFIER 2024 | PARANA, BRAZIL



AGE GUIDELINES (8)

All participants' ages will be validated by the event organizer prior to the competition.

8.1 COMPETING AGE

The age that you turn during the qualifying year (**2024**) is your "Competition age", which you will maintain for the 2025 World championships.

This means whatever age you are as of DEC 31st 2024 is your "Competition age".

EXAMPLE:

If you are 11 turning 12 years old in 2024 your "Competition age" is 12 (Junior)

If you are 12 turning 13 years old in 2024 your "Competition age" is 13 (Youth)

If you are 16 turning 17 years old in 2024 your "Competition age" is 17 (Youth)

If you are 17 turning 18 years old in 2024 your "Competition age" is 18 (Adult)

AGAIN: For the 2025 World Dance Crew Championship you remain the age you were at the Qualification in 2024 (your "Competition age").

EXAMPLE:

2024 - Qualification Event

Perform as a 12-year-old

Perform as a 17-year-old

2025 - World championships

Turned 13 years old (Will still compete as 12-year-old)

Turned 18 years old (Will still compete as 17-year-old)

8.2 AGE TABLE (MADE EASY)

AGE TABLE:

JUNIOR	BORN 2012 or After	You will compete as a Junior
YOUTH	BORN 2007 to 2011	You will compete as Youth
ADULT	BORN 2006 or before	You will complete as an Adult

Exception: A dancer who wishes to participate in 2024 who 'ages out' of a division, may still compete in 2024, but will not be eligible to compete in that division for the 2025 world championship. Eg: 17year old turning 18 in 2024 may compete in a youth crew in 2024 but not be eligible in 2025.

CREW AMENDMENTS (9)

9.1 CHANGES & SUBSTITUTIONS

Crews may replace, add, or subtract registered dancers prior to, and in between rounds. Substitutes & additions MUST be registered at the time of registration.

1.Crews - Up to 3 Substitutes, 3 Additions, & 3 Subtractions (Total 5-9 members)

2.Mega Crews - Up to 5 Substitutions, 5 Additions, & 5 Subtractions (Total 15-40 members)

If a NEW non-registered dancer needs to be added due to injury or unforeseen circumstance, they MUST be registered before the competition start time and approved by the Technical Director.

NOTE: Once qualified, a crew may change their 2024 team as deemed necessary for the 2025 WORLD CHAMPIONSHIPS. There is no limit on changes; however, the team must be finalized by the 2025 registration (crew division requirements still apply).

**Unregistered dancers will be deemed invalid, and the crew will be disqualified.

9.2 INJURY & UNEXPECTED CIRCUMSTANCES

Injuries must be reported to the event organizer during the competition period. The crew member(s) affected must have medical clearance to compete and be verified by the Technical Director prior to the stage run through and/or performance.

An additional waiver may be required, for lesser injuries before performing.

If, due to injury or unexpected circumstance, a 5-member-crew must dance with 4 members, they will still be eligible to compete with the appropriate documentation/information. However, this will be at the discretion of the Technical Director, upon presentation of a medical certificate or proof of circumstance.

If a technical difficulty necessitates a restart, a crew must stop immediately and leave the stage. They may also choose to finish the routine if possible. A restart will be awarded if they choose to accept, and circumstances were beyond their control. A deduction will apply if the stoppage is unfounded, as decided by the Technical Director.

For all injuries and unexpected/dangerous circumstances, the Technical Director in accordance with relevant information and advice, will then determine whether or not a dancer or team will be allowed to compete or perform. The decision will be final.

ROUTINE & MUSIC (10)

10.1 CHANGES

Crews may change the routine and must prior to & during WDCC competitions. Music must be received by WDCC deadlines to accept the changed submissions. (1 hour prior to stage run).

10.2 MUSIC GUIDELINES

- a. In addition to emailing music to WDCC, crews must also provide a quality mix on a USB flash drive with no other files, no shorter or longer than the division time length (Section 7) and clearly labeled with the crew's name and division.
- b. Music length is determined by the first and last audible sound.
- c. Music must be free of any swearing, vulgar, or demeaning terms or language. Any music identified as such during the stage rehearsal must be edited before the performance and resubmitted 1 hour prior to the event start time.

10.3 ROUTINE GUIDELINES

Dance styles should be Street, Club, Party, or Studio related. The number of styles performed is up to the crew. Cultural influence and innovation are allowable.

NOTE: A MIN OF 2 STYLES IS COMPULSORY.

Having too many styles can affect the flow of a routine & too little can limit the creativity, variety and contrast of a routine.

Recommendations for a well-balanced routine is 3-4 Styles. (This is not mandatory; however, the minimum requirement is at least 2 styles. Less than two styles will result in a deduction under difficulty (deductions are subjective to each technical judge).

10.4 ATTIRE & PROPS

Attire should reflect the styles and flavor of the chosen dance styles. Creative flair is up to the Crew and inclusive of clothing accessories such as hats, bandanas etc. Accessories like belt bags & backpacks are allowable as long as they are worn and not used as props. (Not Applicable to Super Crews.) Super crews are allowed hand held props and should not require any set up time. Attire should be tasteful. Any dancewear deemed inappropriate will be given a Zero for attire (a loss of 5 points). If the crew progresses, attire issues will be addressed by the Technical director. For any queries, please seek approval via WDCC Headquarters.

CRITERIA & SCORE (11)

ARTISTIC SCORE

1. CREATIVITY

20 POINTS

Dance choreography (10)

Routine Structure/Ideas (5)

Attire (5)

The display of unique movement & combinations within the chosen styles, showcasing creative flow, moments, ideas, & apparel that captures the street or dance style essence.

2. PERFORMANCE

10 POINTS

Stage Presence (5)

Interaction & audience connection (5)

The ability to capture and hold the judge's attention through intensity, showmanship, subtlety, and the X factor. Crews form connections with other team members and the audience, utilizing facial performance and authentic emotion.

3. STAGE CRAFT

10 POINTS

Formations & transitions (5)

Stage use & levels (5)

The presentation of well-crafted, signature formations & levels that transition seamlessly between dance sections to utilize different areas of the stage.

4. MUSICALITY

10 POINTS

Beat, lyrical, & percussion interpretation (5)

Music Mix (5)

The creative use of musical patterns, beat and lyric interpretation, & the matching of movement with the music. The entertaining mix should include seamless transitions, creative mixing, flow, and adjusted sound levels for a well-thought-out, quality sound track.

TECHNICAL SCORE

1. DIFFICULTY

20 POINTS

Elements, Speed, co-ordination, & overall level of skill (20)

The demonstration of complex choreography, skills, & elements within the styles performed. Consideration is given to technique, strength, speed, coordination, and the overall ability of all crew members to showcase a high level of difficult choreography and combinations.

2. EXECUTION

10 POINTS

Body control & placement (10)

The accurate isolation, control, and placement of the entire body, including balance, stabilization, speed, and angles of movement.

3. SYNCHRONIZATION

10 POINTS

Timing, Synchronization & Range of motion (10)

Perfectly timed movements that are in sync with every member of the crew allowing for in cannon and off beat sections. The range of movement is the same and in unison.

4. FOUNDATIONS & INNOVATION

10 POINTS

Groove & Style (5)

Authentic innovation (5)

The ability to demonstrate authenticity & embody the chosen styles, all while presenting a foundational knowledge and an individual touch or progression of the genre.



ASIA QUALIFIER 2024 | MANILA, PHILIPPINES



RESULTS (12)

12.1 TABULATION

1. A panel of 6 judges will average all Artistic (3 Judges) & Technical (3 Judges) scores and then total for a score out of 100 (Qualifying Championships).
2. A panel of 10 judges will discard the highest and lowest Artistic and Technical scores. The remaining Artistic and Technical scores will be averaged & added together for a total score out of 100 (World Championships).
3. The final score will be rounded to the nearest hundredth of a point (e.g. 75.24).

12.2 RESULTS, PROTESTS & TIE SCORES

1. Scores are final.
2. Protests are available for disqualifications, deductions, & unexpected circumstances. This must be lodged within 30 minutes of the results being posted. An outcome will be decided within 1 hour of the protest by the Technical Director. For Finals, crews will be notified of disqualifications/deductions immediately after a crew's performance. Protests are to be lodged immediately, and an outcome will be made final after a review within 15 minutes.
3. In the event of a tie, the crew with the highest artistic score will break the tie. If the artistic scores are tied, the crew with the higher preliminary score will break the tie (consistency). If the Preliminary scores are tied, the results will stand as a tied result.

DEDUCTIONS & DISQUALIFICATION (13)

13.1 FALLS & MISTAKES

Falls, mistakes, missed choreography & attire that is not intact will affect the technical score under execution and synchronization.

13.2 MUSIC & MOVEMENT

Inappropriate music/choreography will affect the performance score.

For unacceptable music circumstances (e.g. Offensive language), crews will need to submit a new acceptable edited track prior to the competition start time in order to perform.

13.3 DISQUALIFICATIONS

The decision to disqualify a crew/crew member will be at the discretion of the Technical Director & Head judge. Circumstances include but not limited to:

1. Unacceptable behavior at any qualifying or world championship event.
2. Age or crew composition requirements unfulfilled.
3. Unregistered or unapproved dancers.
4. No shows (Failing to appear).
5. Any other circumstances deemed appropriate.

13.4 DEDUCTIONS

1. Late starts (failing to appear within 30 seconds once announced) will be deducted from the total score **(10 points)**.
2. Pre-performances and post performances are not permitted. Music will not begin until the crew is stationary. Post performances will be deducted **(5 points)**.
3. Super crews must begin and finish with all crew members on stage (No mandatory time to stay on or end with all members). Crew members may exit and enter the stage throughout the routine via designated exits and entries only (e.g, no jumping off the front of the stage). No back-stage crossovers are allowed. Either offense will be deducted from the total score **(10 points)**.
4. Junior, Youth, & Adult crews must begin, perform, and end on stage within the performance area. Failure to do so will result in a deduction **(10 points)**.
5. Discarding clothing tastefully is allowable but must be discarded to an area of the stage which is not used by the crew again as to not be a safety concern **(5 points)**.
6. No use of substances, props, materials, & makeup, that might risk the safety or damage of the surface of the stage (e.g, Glitter, Paint, damaging shoes or props), **(5 points)**.
7. The stopping and restart of a routine for no legitimate reason will receive a deduction **(10 points)**.

JUDGING (14)

14.1 JUDGING PROCESS

Judges will sit in an alternating 1 Artistic and 1 Technical judge order, with the Head judge and Technical Director overseeing the panel. Tabulation will also take place at the judging panel. At the 2025 World championships; NO judge will score their own country. The Head Judge OR Technical Director overseeing the scoring range will sit in and score according to the Judge's scoring range.

14.2 JUDGES

TECHNICAL DIRECTOR

The Technical Director will oversee all inquiry forms, allocation of judging panels, and assist the Head Judge. They will oversee the tabulation, panel processes, and outcomes. Responsible for judge training, event processes, facilitating rules, and criteria outcomes, and substituting scores where needed, for judges who have their own country in the division.

HEAD JUDGE

Oversees the scoring panel, ranges, and substituting any score for a judge who has their own country in the division they are scoring.

WORLD CHAMPIONSHIP ELITE JUDGE

An International Judge who will judge at either Qualifiers, World Championships, or both.

CHAMPIONSHIP QUALIFIER JUDGE

A Regional Judge who will judge at a qualifier.

ARTISTIC & TECHNICAL JUDGES (6 OR 10 JUDGES)

Will determine all Artistic or Technical scores & provide feedback

FEEDBACK (15)

15.1 GENERAL FEEDBACK

Feedback for each crew will be provided via a scorecard after preliminaries for all teams. Feedback is subjective to each member of the panel of judges at the WDCC event. Feedback may vary between judges. Scorecards are available to pick up by the nominated manager at the registration or information desk prior to finals.

15.2 World Championship Feedback

5 minute feedback sessions are available for progressing crews to World Championship Finals. This is available after the Semifinal session where time allows.

AWARDS & PRIZE-GIVING (16)

16.1 PRIZE-GIVING

Prize-giving will take place after finals, beginning with individual awards and then commence in division order unless otherwise amended by the Technical Director.

16.2 CHAMPIONSHIP (QUALIFIER) AWARDS

Medals awarded in each division GOLD, SILVER, BRONZE

16.3 WORLD CHAMPIONSHIP AWARDS & PRIZE MONEY

Medals awarded in each A Final	GOLD, SILVER, BRONZE
Plate awards in each Plate Final	GOLD, SILVER, BRONZE
Best Male Adult Dancer	\$500 USD
Best Male Youth Dancer	\$500 USD
Best Male Junior Dancer	\$500 USD
Best Female Adult Dancer	\$500 USD
Best Female Youth Dancer	\$500 USD
Best Female Junior Dancer	\$500 USD

16.4 WORLD CHAMPIONSHIP CREW PRIZE MONEY

Junior / Youth / Adult

1st Place Crew	\$5,000 USD
2nd Place Crew	\$3,000 USD
3rd Place Crew	\$2,000 USD

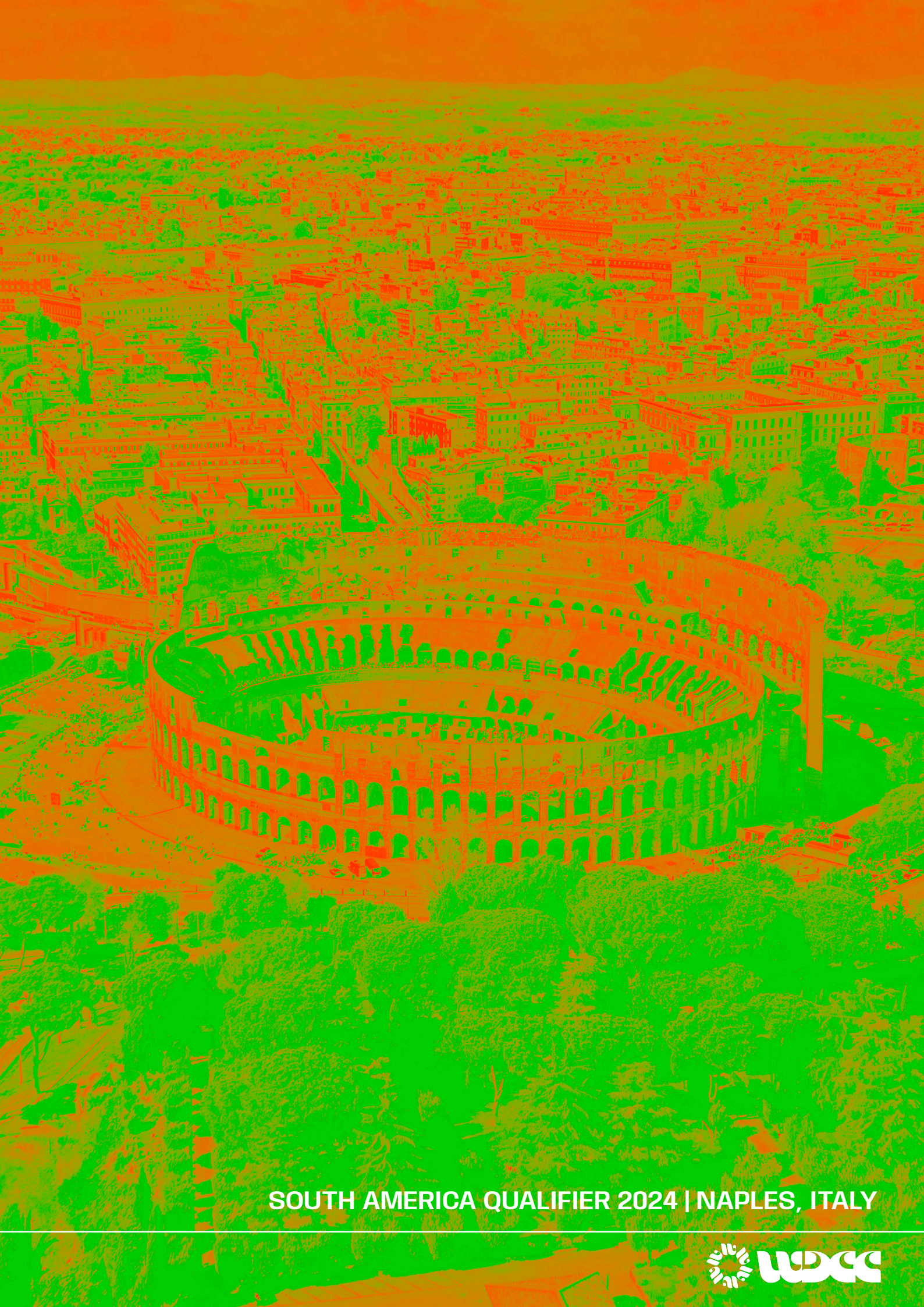
Youth Super Crew

1st Place Crew	\$10,000 USD
2nd Place Crew	\$7,000 USD
3rd Place Crew	\$3,000 USD

Open Super Crew

1st Place Crew	\$25,000 USD
2nd Place Crew	\$15,000 USD
3rd Place Crew	\$10,000 USD

NOTE: Bank account for prize money will be confirmed and then become the dancers & managers responsibility to account for distribution.



SOUTH AMERICA QUALIFIER 2024 | NAPLES, ITALY



FAQS (17)

Q: CAN A COUNTRY COMPETE AT A CHAMPIONSHIP (QUALIFIER) EVENT AS WELL AS SUBMIT A VIDEO SUBMISSION?

Answer: Yes, they may do both; however, there is more chance to qualify for the World Championship at a qualifier event, as video submissions are limited.

Q: CAN YOU SUBMIT MORE THAN ONE VIDEO SUBMISSION?

Answer: No, a crew may only submit one video. Furthermore, a dancer may only participate in 1 video submission per division. If you dance in multiple crews in the same division, you may only pick one crew to submit a video with.

Q: CAN A COUNTRY QUALIFY AT A CONTINENTAL CHAMPIONSHIP OUTSIDE THEIR REGION?

Answer: Yes. You may compete at any Qualifier event around the world in 2024.

Q: WHAT IF MY COUNTRY IS FAR AWAY FROM A 2024 QUALIFYING CHAMPIONSHIPS?

Answer: You may submit a video submission however limited spots are available.

Q: HOW DO I KNOW WHAT AGE I SHOULD COMPETE AS?

Answer: If you were

- BORN in 2012 or after - You will compete as a Junior
- BORN in 2007 to 2011 - You will compete as Youth
- BORN in 2006 or before - You will complete as an Adult

Q: IS IT BETTER TO SUBMIT A VIDEO OR COMPETE AT A CHAMPIONSHIP?

Answer: We recommend competing at a Championship (qualifier) event for the overall experience and medals, as the chance to qualify through video submission is limited.

Q: WHY IS THE WORLD CHAMPIONSHIP EVERY TWO YEARS?

Answer: Every year there are Championship events available. We alternate 1 year as a Qualifying year with qualifying Championships around the Globe (There will be one close to your country). Then the following year, the World Championship. (This allows more time for crews to prepare for the World championship while still remaining the same age, and being able to compete each year at a major event nearby).

CONTACT

EMAIL INFO@WORLDDANCECREWCHAMPIONSHIP.COM

WEBSITE WWW.WORLDDANCECREWCHAMPIONSHIP.COM

INSTAGRAM [@WORLDDANCECREWCHAMPIONSHIP](https://www.instagram.com/WORLDDANCECREWCHAMPIONSHIP)
[@WDCC.EUROPE](https://www.instagram.com/WDCC.EUROPE)
[@WDCC.ASIA](https://www.instagram.com/WDCC.ASIA)
[@WDCC.PACIFIC](https://www.instagram.com/WDCC.PACIFIC)
[@WDCC.NTHAMERICA](https://www.instagram.com/WDCC.NTHAMERICA)
[@WDCC.STHAMERICA](https://www.instagram.com/WDCC.STHAMERICA)

